



LAMINAR
FLOW





EXPLORE TECNIPLAST COMPLETE RANGE OF LAMINAR FLOW SOLUTIONS: OUR CUTTING-EDGE TECHNOLOGY IS AT YOUR SERVICE, TO ASSURE TOP ENVIRONMENTAL, OPERATOR AND ANIMAL SAFETY.

TECNIPLAST IS THE IDEAL PARTNER AT YOUR SIDE FOR ANIMAL CARE PRODUCTS AND RELATED EQUIPMENT.

OUR CONSTANT INVESTMENT IN TOOLING, TECHNOLOGIES, AUTOMATION, PRODUCTION CAPABILITY, STOCK AVAILABILITY, STAFF RECRUITMENT AND TRAINING, TOGETHER WITH THE ISO CERTIFIED QUALITY AND ENVIRONMENT MANAGEMENT SYSTEMS, ARE THE KEY-FACTORS OF TECNIPLAST SUCCESS SINCE THE EARLY 1950S.

OUR EVER WIDENING RANGE OF HUSBANDRY AND LAMINAR FLOW EQUIPMENT USED IN BIOMEDICAL RESEARCH ALLOWS US TO MEET ALL CLIENTS' NEEDS, PROVIDING SOLUTIONS FOR EVERY ANIMAL MODEL.

AS WELL AS PRODUCING TOP QUALITY EQUIPMENT, TOGETHER WITH OUR NETWORK OF SPECIALISTS AND CONSULTANTS WE ARE REGULARLY INVOLVED IN THE DESIGN AND CONSTRUCTION OF NEW ANIMAL FACILITIES AND IN THE REFURBISHMENT OF EXISTING ONES, THUS DESIGNING AND DEVELOPING 100% TAILOR-MADE PRODUCTS AND PROJECTS.

THAT'S THE REASON WHY TECNIPLAST IS NOT ONLY A SUPPLIER, BUT A REAL PARTNER AT YOUR SIDE.

INDEX

BIOSAFETY CABINETS 5

6 • BSD60
8 • IBS



11 ALLERGEN CONTAINMENT

12 • DS36L
13 • DS72
14 • DFB3 PLUS



SAFE BARRIER SOLUTIONS 17

18 • AIR SHOWER
19 • PT60
19 • PASS THROUGH BOX





PIUROPKTESOR
GEMAKLEIT

TECHNOLAST



BIOSAFETY CABINETS



BSD60



IBS

TECNIPLAST BIOSAFETY CABINETS, SPECIFICALLY DESIGNED FOR ANIMAL RESEARCH LABORATORIES, GUARANTEE THE UTMOST PROTECTION OF THE OPERATORS FROM THE INHALATION OF INFECTIOUS PARTICLES, DUST, ALLERGENS AND PATHOGENS.

AT THE SAME TIME, TECNIPLAST BIOSAFETY CABINETS GUARANTEE AN EXCELLENT PROTECTION OF THE ANIMALS FROM CONTAMINANTS, BY MINIMISING THE EXPOSURE TO AEROSOLS, THUS PRESERVING ENVIRONMENTAL SAFETY.



BSD60

SURFACE WIDTH: 150cm - 60"

- Large working area and an automatic sash window ideal for cages with a large footprint
- Two different configurations: Cage Changing Station or Microbiological Cabinet in Class II Biohazard configuration
- Auto-lift working surface to help the operator to easily introduce and remove the cages
- Double centrifugal fans for total operator, product and environmental protection
- High cleanability and ergonomic design

BSD60 is specifically designed for Tecniplast Double Decker cages

TAKE A LOOK AT TECNIPLAST
HOUSING - IVCs BROCHURE
TO FIND OUT MORE



INCREASED FLEXIBILITY AND COMFORT

OVERALL DIMENSIONS (WxDxH)	WORKING AREA DIMENSIONS (WxDxH)	WEIGHT
1781 x 855 x 1990 – 2228 mm 70" 1/8 x 33" 5/8 x 78" 3/8 – 94" 1/8	CS: 1497 x 550 x average 770 mm 58" 7/8 x 21" 5/8 x 29" 4/8 BS: 1497 x 550 x average 690 mm 58" 7/8 x 21" 5/8 x 27" 1/8	390Kg – 859 lbs



UV LAMP



ISOcage
Biosafety Station
+
ISOcage
=
Tecniplast
ISOcage System

TAKE A LOOK AT TECNIPLAST
HOUSING - IVCs BROCHURE
TO FIND OUT MORE



IBS

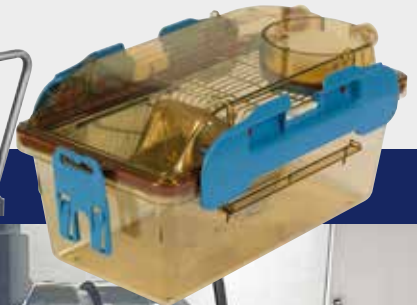
SURFACE WIDTH: 150cm - 60"

- Purposely designed for research activity in ABSL3 Level to improve laboratory safety and process accuracy when infected animals are being handled
- IBS combines the performance of a Biohazard Class II Type A2 Cabinet and of a work station to assure top containment and protection of both personnel and environment from the inhalation of infectious particles, hazardous pathogens, dust and allergens during animal handling procedures
- IBS features a "Dunk Tank" connected on the right side of the cabinet. The tank is equipped with interlocked doors to maintain the barrier between dirty and clean sides preventing environmental contamination
- Soft touch control panel for constant monitoring of working conditions. A menu with diagnostics enables the operator to check the conditions of the HEPA filters and of the UV-C lamp, as well as receiving precise updates on scheduled maintenance
- High cleanability thanks to IBS rounded corners; easy access to the pre-filters housed below the TRESPA® removable panels

OPTIONAL AUTOCLAVE TRANSFER CHAMBER

Germ-free or Gnotobiotic animal models?

IBS GERM-FREE IS THE SOLUTION YOU ARE LOOKING FOR! CONTACT US FOR FURTHER DETAILS



- Standard UV-C light with motorized swivelling panel
- Optional autoclave transfer chamber connected to the changing station by means of an air-tight double door.

OVERALL DIMENSIONS (WxDxH)

9ISODTU: 2200 x 898 x 2274-2639 mm
86" 2/3 x 35" 3/8 x 89" 1/2-103" 7/8

9ISODTATCU: 2739 x 898 x 2274-2639 mm
107" 3/4 x 35" 3/8 x 89" 1/2-103" 7/8

WORKING AREA DIMENSIONS (WxDxH)

1346 x 535 x average 740 mm
53" x 21" x 29" 1/8

WEIGHT

9ISODTU: 530 Kg – 1168 lbs
9ISODTATCU: 550 Kg – 1212 lbs



DUNK TANK DISINFECTION SYSTEM



ALLERGEN CONTAINMENT



DS36L



DS72



DFB3
PLUS

TECNIPLAST COMPLETE ARRAY
OF ALLERGEN CONTAINMENT
SOLUTIONS PERFORMS:

- HIGH PROTECTION AGAINST ALLERGENS AND CONTAMINANTS
- WIDE WORKING AREA
- HIGH CLEANABILITY AND VISIBILITY
- MICROPROCESSOR CONTROLS AND SAFETY ALARMS



EASE OF USE WITH THE SLIDING REDUCTION FUNNEL



DS36L

SURFACE WIDTH: 90cm - 36"

- Spacious working area, ideal for both small and large cages; maximum operator comfort thanks to the wide access opening in a compact design
- Waste bag trolley and sliding reduction funnel to simplify waste bag removal under operator's constant protection
- Two Levels of pre-filtration providing extended HEPA filter life
- Microprocessor controls and safety alarms
- Available accessories:
 - Polyethylene bin with S/S trolley
 - Stainless steel waste bag trolley with hinged opening for bag removal from the front

OVERALL DIMENSIONS (WxDxH)	WORKING AREA DIMENSIONS (WxDxH)	WEIGHT
1244 x 881 x 1997 mm 49" x 34" 5/8 x 78" 5/8	1000 x 580 x 600 mm 29" 1/3 x 22 7/8 x 23" 5/8	200 Kg – 441 lbs

Do you want to further implement your bedding handling operations?

TAKE A LOOK AT IWT **BEDDING HANDLING** BROCHURE TO FIND OUT MORE





DS72

SURFACE WIDTH: 180cm - 72"

In addition to what offered by the DS36L model, DS72 features:

- Working area divided in two sides - one for carrying out the dumping of bedding and animal waste operations into dedicated containers; - the other for the positioning of the trolleys to hold cages and trays to be dumped
- Available accessories:
 - Mobile funnel
 - Stainless steel waste bag trolley with hinged opening
 - Lifter for dirty cages trolley



OVERALL DIMENSIONS (WxDxH)	WORKING AREA DIMENSIONS (WxDxH)	WEIGHT
2225 x 873 x 2111 mm; 87"5/8 x 34" 3/8 x 83" 1/8	2095 x 746 x 1612 mm	420 kg – 926 lbs
Mobile Funnel; 980 x 746 x 1000 mm; 28" 5/8 x 29"3/8 x 39" 3/8	82" 1/2 x 29 3/8 x 63"4/8 without mobile funnel	





OVERALL DIMENSIONS (WxDxH)	WORKING AREA DIMENSIONS (WxDxH)	WEIGHT
Approximate 3075 x 3298 x 2881 mm 121" 1/8 x 129" 7/8 x 113 3/8	Approximate 2903 x 2000 x 2100 114" 1/8 x 78" 6/8 x 82" 5/8	Approximate: 1220 kg – 2646 lbs

DFBS PLUS

- Down Flow Booth for manual cage cleaning and dirty bedding disposal
- Working area suitable for the cleaning of all large cage and tray sizes
- No physical barriers between the operator and the disposal funnel; protection is guaranteed by the vertical laminar airflow Class ISO 5 (ISO 14644-1)
- Filtration system: the upper filtration area is shielded by perforated diffuser panels in anodised aluminium
- Plenum: negative pressure design to prevent escape and/or by-pass of HEPA filter by contaminated air and/or dust
- PVC strip curtains (2 mm thick) to bound the equipment operating area
- Microprocessor Controls and Safety Alarms
- Optional integration with IWT Bedding Handling System for totally smooth and simple material disposal and dispensing operations, cutting operator's exposure and effort to a minimum



*Tecniplast cage lifters:
top safety and ergonomics*



- Available accessories:
 - Shredder to ensure material uniform cutting in size and weight, thus preventing clogging upstream of conveyance;
 - Different trolleys to effectively accommodate any type of load and cage sizes;
 - Other accessories available upon request



SAFE BARRIER SOLUTIONS



AIR
SHOWER



PT60



PASS THROUGH
BOX

TECNIPLAST "SAFE BARRIER" SOLUTIONS ARE DESIGNED TO IMPROVE LABORATORY ENVIRONMENTAL CONDITIONS, CONTRIBUTING TO THE DEVELOPMENT OF SAFER PROCEDURES AND MORE FLEXIBLE, EASIER WAYS OF WORKING.

OUR WIDE EXPERIENCE ALLOWS US TO PROVIDE YOU WITH THE BEST SOLUTION WHEN TRANSFER BETWEEN TWO ENVIRONMENTS WITH DIFFERENT LEVELS OF CONTAMINATION IS NEEDED.



AIR SHOWER

- High level of cleanliness thanks to 22 adjustable air nozzles to better direct the air flow
- Average air speed: 30 m/s
- All surfaces are made of AISI 304 with scotch brite finishing for easy cleaning and product duration over time
- HEPA filter with H13 MPPS efficiency in accordance with EN 1822. Filter access from the interior ceiling for easy maintenance
- Doors made of clear anodized aluminium; tempered glass provided with electric locking system guarantees high visibility and low noise level
- Door interlocks located in the two door-jamb at the entrance and exit ways. The dirty side lock automatically releases in case of power cut loss or when the Emergency Stop button is pushed
- Emergency Stop buttons inside and outside the Air Shower, on both sides, close to the entrance doors for maximum safety
- Interior ceiling with a fluorescent light for optimal and uniform lighting
- PLC to control operations sequence

OVERALL DIMENSIONS (WxDxH)

1300 x 1450 x 3010 mm
51" 1/8 x 57"1/8 x 118"1/8

WORKING AREA DIMENSIONS (WxD*xH*)

1300 x 900 x 2078 mm
51" 1/8 x 35"3/8 x 81"6/8
*Nozzles not included

WEIGHT

900 kg – 1985 lbs



What about hand disinfectants for top hygiene?

APUS, TECNIPLAST AUTOMATIC ATOMIZER FOR NO-CONTACT HAND DISINFECTION, SPRAYS PRECISE DOSES OF DISINFECTANT.

SAFETY IS OUR MUST!

PT60

SAFE TRANSFER OF ANIMALS

- PT60 features a laminar flow pass box (ISO 5 class) and a bio-safety cabinet for mouse and rat cage changing
- The pass-through box can be positioned on both sides of the Biosafety Changing Station
- The door interlocking system prevents loss of pressure balance between the two separate environments
- A fan positioned above the pass-through chamber recirculates HEPA-filtered air and distributes it inside the pass box as a uniform laminar flow, creating a barrier between the Biosafety CS and the environment
- Two models available - with one door (type A) or two interlocked doors (type B)

OVERALL DIMENSIONS (WxDx minimum H)	WEIGHT
9PT60AU: 2115 x 895 x 1992 mm 83"3/8 x 35"1/4 x 78"3/8	9PT60AU: 400Kg – 882 lbs
9PT60BU: 2345 x 895 x 1992 mm 92"3/8 x 35"1/4 x 78"3/8	9PT60BU: 450Kg – 992 lbs

WORKING AREA DIMENSIONS (WxD*xH*)
9PT60AU: Changing station 1486 x 535 x 740mm; 58" 1/2 x 21" x 29" 1/8 Pass Box 485 x 244 x 220 mm; 19"1/8 x 9" 5/8 x 8" 5/8
9PT60BU: Changing station 1486 x 535 x 740mm; 58" 1/2 x 21" x 29" 1/8 Pass Box 485 x 552 x 419 mm; 19"1/8 x 21" 6/8 x 16" 4/8

PASS THROUGH BOX

SAFE TRANSFER OF ANIMALS AND TOOLS

- AISI 304L scotch bright finishing stainless steel panels, with two 8mm tempered glass doors. Two interlocking electrically operated doors ensure the separation of the two environments
- Removable tray for cleaning operations
- On both sides a green light shows when the door can be opened by pressing the button
- Working procedure: the first operator pushes the button to open the door on side "A"; the interlocking device automatically keeps the other door on side "B" locked. The items are inserted and the first operator closes the door. On side "B" the green light switches on: the second operator can now push the button and open the door to take the items. In this phase the door on side "A" is locked.

OVERALL DIMENSIONS (WxDxH)
SMALL : 600 x 600 x 670 mm; 23" 5/8 x 23"5/8 x 26"3/8
LARGE: 700 x 600 x 1050mm; 27"4/8 x 23" 5/8 x 41" 3/8

WORKING AREA DIMENSIONS (WxDxH)	WEIGHT
SMALL: 496 x 508 x 520 mm; 19"4/8 x 20" x 20"4/8	SMALL: 66 Kg – 146 lbs
LARGE: 596 x 508 x 900 mm; 23"4/8 x 20" x 35"3/8	LARGE: 96 Kg - 212 lbs

COMPANY WITH
QUALITY SYSTEM
CERTIFIED BY DNV GL
= ISO 9001 =

COMPANY WITH
ENVIRONMENTAL SYSTEM
CERTIFIED BY DNV GL
= ISO 14001 =

 **TECNIPLAST**
i n n o v a t i o n t h r o u g h p a s s i o n

HEADQUARTERS

ITALY | Tel. +39 0332 809711 · www.tecniplast.it · E-mail: tecnicom@tecniplast.it; venditeitalia@tecniplast.it

SISTER COMPANIES

AUSTRALIA/NEW ZEALAND | Tel. + 61 2 8845 6500 · www.tecniplast.it · E-mail: info@tecniplast.com.au

CHINA | Tel. + 86 (0)21 50810920 · www.tecniplast.cn · E-mail: tecniplastchina@tecniplast.it

FRANCE | Tél. +33 (0)4 72 52 94 41 · www.tecniplast.fr · E-mail: info@tecniplast.fr

GERMANY | Tel. +49 (0)8805 921320 · www.tecniplast.de · E-mail: info@tecniplast.de

UNITED KINGDOM | Tel. + 44 (0)845 0504556 · www.tecniplast.it · E-mail: info@tecniplastuk.com

JAPAN | Tel. +81 (0)3 5770 5375 · www.tecniplast.it · E-mail: info@tecniplastjapan.co.jp

USA | Toll Free: +1 877.669.2243 · www.tecniplastusa.com · E-mail: info@tecniplastusa.com

CANADA | Toll Free: +1 855.347.8718 · www.tecniplastcanada.com · E-mail: info@tecniplastcanada.com

TO FIND YOUR LOCAL DISTRIBUTOR, PLEASE VISIT WWW.TECNIPLAST.IT